

**Bulletin of Insectology Supplemental Material**

Title: **Hoverfly diversity supported by vineyards and the importance of ground cover management**

Authors: **Gaël PÉTREMAND, Martin C. D. SPEIGHT, Dominique FLEURY, Emmanuel CASTELLA, Nicolas DELABAYS**

Bulletin of Insectology, Volume 70 June 2017 pages 147-155

**Supplement A.** Macrohabitats in the two study sites, designed according to Speight and Castella, 2013 (StN Database: content and glossary of terms 2013. Syrph the Net, the database of European Syrphidae. 73, Syrph the Net publications, Dublin, 86 pp.).

**Supplement B.** SO site.

**Supplement C.** BE site.

**Supplement A.** Macrohabitats in the two study sites, designed according to Speight and Castella, 2013 (StN Database: content and glossary of terms 2013. Syrph the Net, the database of European Syrphidae. 73, Syrph the Net publications, Dublin, 86 pp.).

**SO site:**

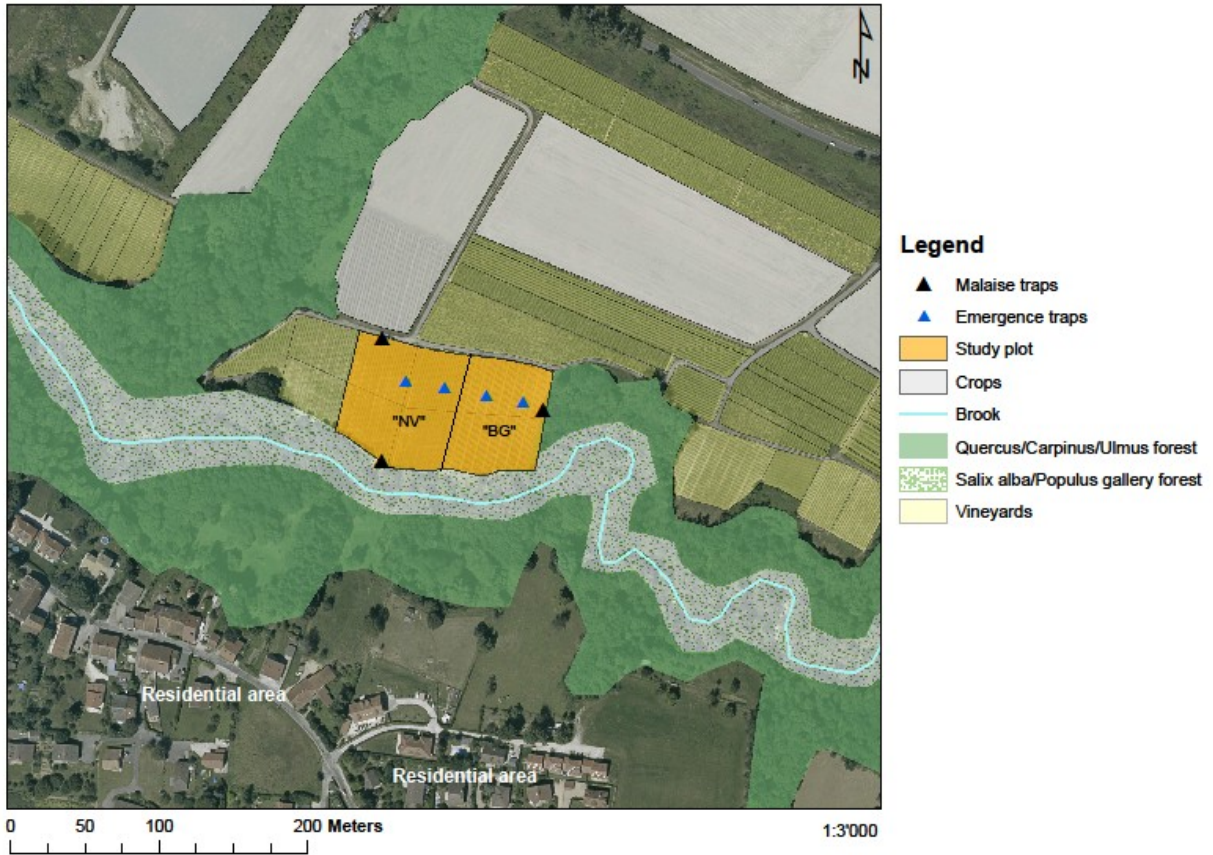
- Various crops
- Permanent field margin
- *Quercus/Carpinus/Ulmus* forest
- *Salix alba/Populus* gallery forest
- Lowland tall herb communities
- Brook in forest
- Edge of running water in forest

**BE site:**

- Various crops
- Permanent field margin
- *Quercus/Carpinus/Ulmus* forest
- Lowland tall herb communities
- Hedge

Supplement B. SO site.

Study plot at Soral (SO)



Supplement C. BE site.

Study plot at Bemex (BE)

